

Momentum West Economic Dashboard for November 2011

UWRF-Center of Economic Research

National Indicators

Indicator	Release Date	Rate	Change from one year ago
Unemployment ¹	Oct '11	9.0%	-0.70 ↓
Inflation ¹	Oct '11	3.6%	2.39 ↓
Real GDP Growth ²	Q3 '11	2.0%	-0.50 ↓

Note: Real GDP data is released quarterly. Inflation, Real GDP and Coincident indicator are presented as a seasonally adjusted annual rate. Simple change is reported. Leading Index of economic activity is expressed as a seasonally adjusted semi annual growth rate.

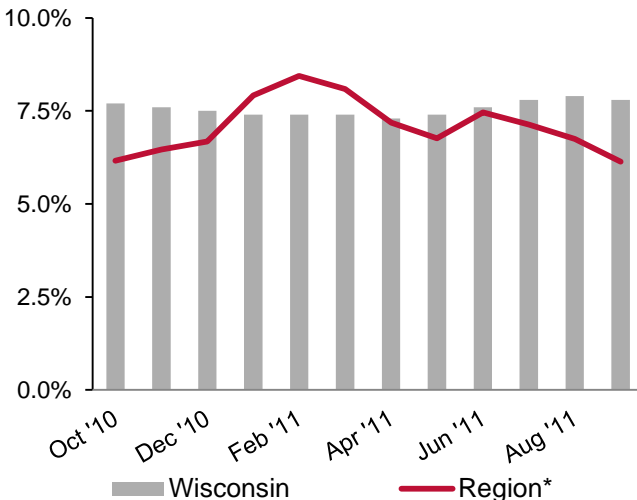
Source: (1) U.S. Bureau of Labor Statistics, (2) U.S. Bureau of Economic Analysis, (3) Federal Reserve Bank of Philadelphia

State Level Indicators

Indicator	Release Date	Level	Change from one year ago
Unemployment ¹	Sep '11	7.8%	-0.10 ↓
Employment ¹	Sep '11	2,757,200	-0.40% ↓
Labor Force ¹	Sep '11	3,057,877	0.07% ↑
Coincident Indicator ³	Sep '11	-1.30%	-0.78% ↑
Leading Indicator ³	Sep '11	-0.15%	0.12 ↓
Average Weekly Mang. Hours ¹	Sep '11	41.8 hr/wk	0.48% ↑

Unemployment Rate

	Sep '11	Change from one year ago	Change from last month
Wisconsin	7.8%	-0.10 ↓	-0.10 ↓
Region*	6.1%	-0.18 ↓	-0.61 ↓
Barron	7.1%	0.20 ↑	-0.40 ↓
Chippewa	6.5%	0.20 ↑	-0.50 ↓
Clark	6.9%	-0.80 ↓	-0.80 ↓
Dunn	5.7%	0.10 ↑	-0.70 ↓
Eau Claire	6.0%	0.00 →	-0.50 ↓
Pepin	5.1%	-0.20 ↓	-0.60 ↓
Pierce	4.9%	-0.60 ↓	-0.90 ↓
Polk	7.6%	0.00 →	-0.20 ↓
Rusk	9.6%	0.10 ↑	-0.40 ↓
St. Croix	4.9%	-0.70 ↓	-0.90 ↓

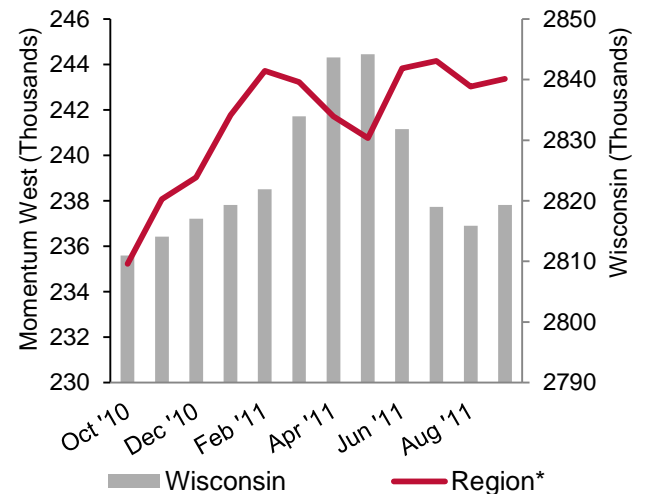


Note: Data for Wisconsin is seasonally adjusted. Other data is not seasonally adjusted and simple change is reported.

Source: U.S. Bureau of Labor Statistics

Total Employment

	Sep '11	Change from one year ago	Change from last month
Wisconsin	2,819,319	0.4% ↑	0.1% ↑
Region*	244,535	0.3% ↑	1.2% ↑
Barron	22,597	-0.1% ↓	1.0% ↑
Chippewa	31,053	0.5% ↑	1.4% ↑
Clark	15,416	-0.4% ↓	0.1% ↑
Dunn	24,243	0.2% ↑	6.4% ↑
Eau Claire	54,194	0.5% ↑	1.4% ↑
Pepin	3,819	0.3% ↑	1.1% ↑
Pierce	21,810	0.9% ↑	-0.2% ↓
Polk	21,740	0.1% ↑	0.9% ↑
Rusk	5,928	-4.5% ↓	0.5% ↑
St. Croix	43,735	0.9% ↑	-0.2% ↓



Note: Data for Wisconsin is seasonally adjusted. Other data is not seasonally adjusted and percent change is reported.

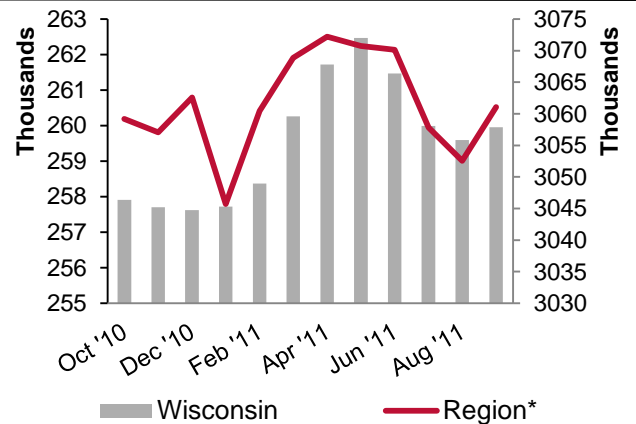
Source: U.S. Bureau of Labor Statistics

*Region refers to the ten county Momentum West economic development region.



Labor Force

	Sep '11	Change from one year ago	Change from last month
Wisconsin	3,057,877	0.3% ↑	0.1% ↑
Region*	260,524	0.1% ↑	0.6% ↑
Barron	24,333	0.2% ↑	0.6% ↑
Chippewa	33,200	0.6% ↑	0.8% ↑
Clark	16,567	-1.2% ↓	-0.7% ↓
Dunn	25,722	0.4% ↑	5.6% ↑
Eau Claire	57,661	0.5% ↑	0.9% ↑
Pepin	4,026	0.1% ↑	0.5% ↑
Pierce	22,942	0.2% ↑	-1.2% ↓
Polk	23,527	0.2% ↑	0.7% ↑
Rusk	6,554	-4.4% ↓	0.0% →
St. Croix	45,992	0.1% ↑	-1.2% ↓



Note: Data for Wisconsin is seasonally adjusted. Other data is not seasonally adjusted and percent change is reported.
Source: U.S. Bureau of Labor Statistics

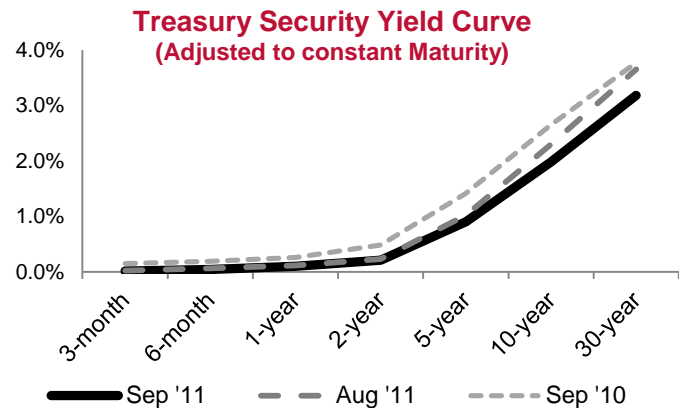
Wisconsin Employment by Sector

Sector	Sep '11	Change from one year ago	Change from last month
Total Nonfarm	2,755,800	0.8% ↑	-0.4% ↓
Mining and Logging	3,000	3.4% ↑	0.0% →
Construction	88,100	-5.0% ↓	1.7% ↑
Manufacturing	446,600	2.9% ↑	-0.7% ↓
Trade, Transportation & Utilities	511,200	0.7% ↑	-0.9% ↓
Information	47,400	1.5% ↑	0.9% ↑
Financial Activities	152,800	-2.9% ↓	0.1% ↑
Professional and Business Services	265,600	-1.8% ↓	-0.5% ↓
Education and Health Services	430,200	2.8% ↑	0.6% ↑
Leisure and Hospitality	255,900	2.1% ↑	0.3% ↑
Other Services	145,700	6.5% ↑	1.7% ↑
Government	409,300	-1.8% ↓	-2.7% ↓

Note: All data is seasonally adjusted and percentage change is reported
Source: U.S. Bureau of Labor Statistics

Selected Interest Rates

Interest Rate	Release Date	Level	Change from one year ago
Bank Prime Rate ¹	Oct '11	3.25%	0.0 →
30-year Fixed			
Rate Mortgages ¹	Oct '11	4.07%	-0.2 ↓
SBA 504 20-year			
Gross Debenture ²	Oct '11	4.61%	-0.3 ↓



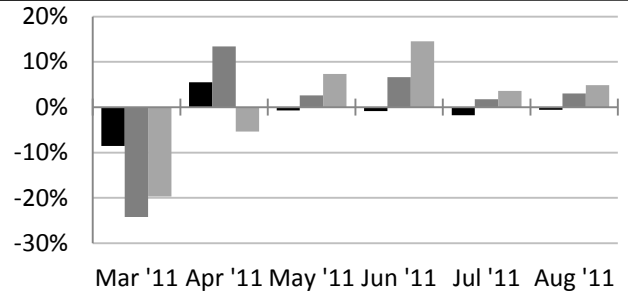
Source: (1) Federal Reserve Board of Governor. (2) Wisconsin Business Development Finance Corp.

*Region refers to the ten county Momentum West economic development region.



Case-Shiller Home Price Index

	Release Date	Change from one year ago	Change from last month
National	Aug '11	-3.9% ↓	0.0% ↓
Minneapolis	Aug '11	-8.6% ↓	0.2% ↑
Chicago	Aug '11	-5.9% ↓	0.4% ↑



Note: Data is seasonally adjusted and percent change is reported in the table

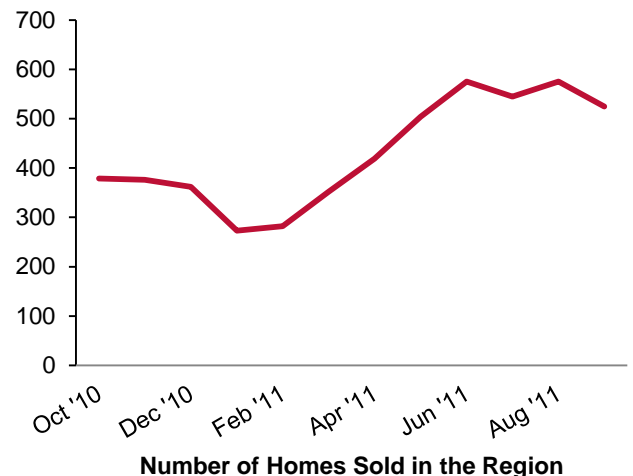
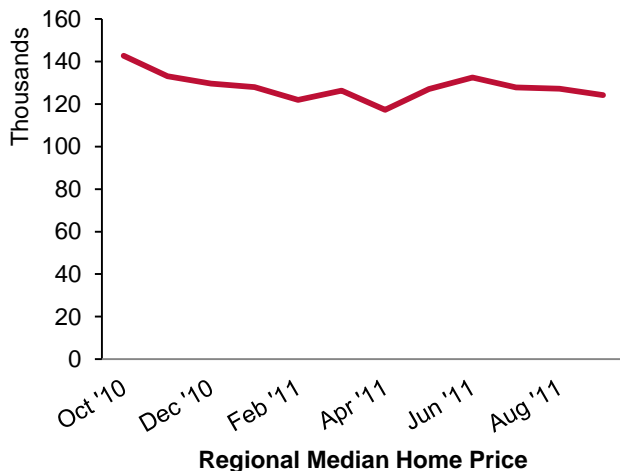
Source: Standard & Poor's®

Median Home Price

County	Sep '11	Change from one year ago	Change from last month
Region*	124,260	-5.3% ↓	-2.4% ↓
Barron	97,500	-13.3% ↓	-3.5% ↓
Chippewa	103,500	-8.4% ↓	-13.8% ↓
Clark	81,000	5.2% ↑	-37.7% ↓
Dunn	123,249	-1.4% ↓	-5.1% ↓
Eau Claire	135,000	0.0% ↑	0.0% →
Pepin	60,000	-56.2% ↓	-19.5% ↓
Pierce	155,000	-1.9% ↓	3.3% ↑
Polk	109,450	9.5% ↑	34.7% ↑
Rusk	74,000	8.1% ↑	-22.1% ↓
St. Croix	145,000	-7.8% ↓	-1.7% ↓

Number of Homes Sold

County	Sep '11	Change from one year ago	Change from last month
Region*	525	36.4% ↑	-8.7% ↓
Barron	68	6.3% ↑	-11.7% ↓
Chippewa	65	58.5% ↑	-1.5% ↓
Clark	21	40.0% ↑	-8.7% ↓
Dunn	62	59.0% ↑	3.3% ↑
Eau Claire	89	17.1% ↑	-33.6% ↓
Pepin	8	-33.3% ↓	-33.3% ↓
Pierce	35	20.7% ↑	2.9% ↑
Polk	76	145.2% ↑	31.0% ↑
Rusk	7	-30.0% ↓	-53.3% ↓
St. Croix	94	38.2% ↑	-2.1% ↓



Note: Data is not seasonally adjusted and percent change is reported

Source: Wisconsin REALTORS® Association

Note: Data is not seasonally adjusted and percent change is reported

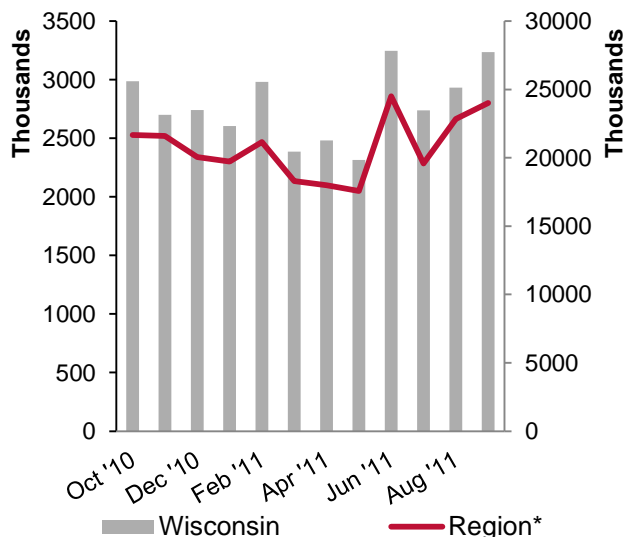
Source: Wisconsin REALTORS® Association

*Region refers to the ten county Momentum West economic development region.



County Sales Tax Revenue

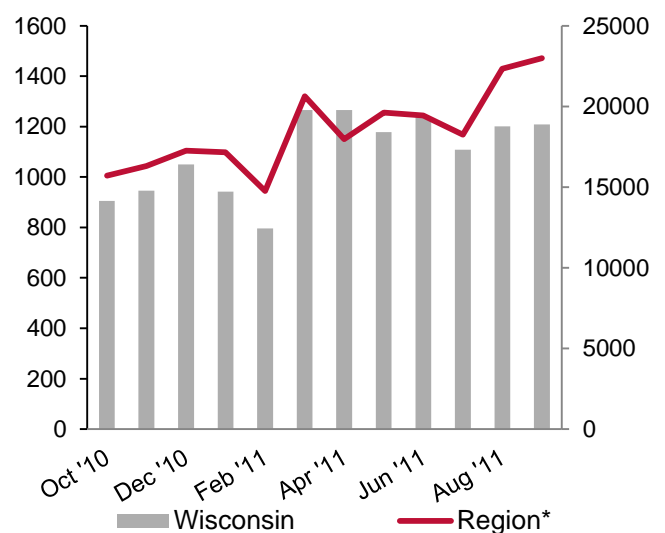
	Sep '11	Change from one year ago	Change from last month
Wisconsin	\$ 27,736,339	-4.1% ↓	10.3% ↑
Region*	\$ 2,801,479	-1.9% ↓	5.2% ↑
Barron	\$ 309,492	-5.5% ↓	-7.4% ↓
Chippewa	\$ 412,968	2.9% ↑	11.7% ↑
Clark	\$ 140,473	-0.4% ↓	4.3% ↑
Dunn	\$ 213,023	3.3% ↑	13.8% ↑
Eau Claire	\$ 751,169	1.3% ↑	6.1% ↑
Pepin	\$ 34,718	-7.8% ↓	-11.3% ↓
Pierce	\$ 141,360	-16.6% ↓	-4.2% ↓
Polk	\$ 226,975	-0.2% ↓	0.0% ↑
Rusk	\$ 84,594	23.4% ↑	32.8% ↑
St. Croix	\$ 486,707	-9.1% ↓	7.7% ↑



Note: Data is not seasonally adjusted and percent change is reported
Source: Wisconsin Department of Revenue

New Vehicle Registration

County	Sep '11	Change from one year ago	Change from last month
Wisconsin	18,888	7.5% ↑	0.6% ↑
Region*	1,471	21.3% ↑	2.9% ↑
Barron	133	7.3% ↑	18.8% ↑
Chippewa	189	29.5% ↑	5.0% ↑
Clark	73	30.4% ↑	-13.1% ↓
Dunn	109	36.3% ↑	4.8% ↑
Eau Claire	304	7.0% ↑	-12.1% ↓
Pepin	25	13.6% ↑	47.1% ↑
Pierce	130	9.2% ↑	-3.0% ↓
Polk	106	6.0% ↑	-4.5% ↓
Rusk	26	0.0% →	-29.7% ↓
St. Croix	376	46.9% ↑	23.7% ↑



Note: Data is not seasonally adjusted and percent change is reported
Source: Wisconsin Department of Transportation

*Region refers to the ten county Momentum West economic development region.

