

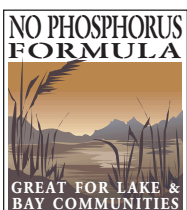
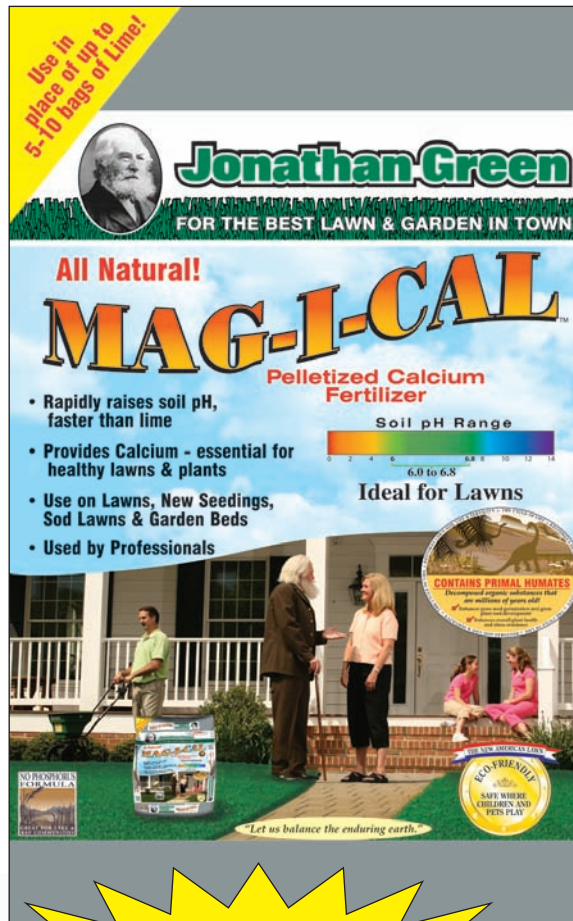
# Jonathan Green

FOR THE BEST LAWN & GARDEN IN TOWN

Sign up to receive timely lawn & garden tips [www.jonathangreen.com](http://www.jonathangreen.com)

## Why Lime When You Can Use MAG-I-CAL?

- Rapidly raises soil pH-faster than lime
- Provides Calcium - essential for healthy lawns
- Releases "tied-up" nutrients in the soil
- Easy to spread pellets-saves time and \$\$
- Use on Lawns, New Seedings, Sod Lawns & Gardens
- "Wakes-up" beneficial micro-organisms
- Inhibits moss growth
- Used by Professionals



**1 Bag of MAG-I-CAL  
= 10 Bags of Lime!\***



**Look for my  
Jonathan Green  
Soil pH Test Kit  
only \$ .99!**



Soil pH Range



**6.0 to 6.8  
Ideal for Lawns**

### MAG-I-CAL - THE MISSING LINK IN YOUR LAWN & GARDEN

\* One 10,000 sq. ft. bag of MAG-I-CAL replaces up to ten bags of lime. Also available in 5,000 sq. ft. size, which replaces up to five bags of lime.