

22.50 LBS. NET WEIGHT (10.21 Kg) • TREATS UP TO 15,000 SQ. FT.

ACTIVE INGREDIENT:
Thiophanate-methyl (dimethyl 4,4'-o-phenylenebis[3-thioallophanate]) 2.08%
OTHER INGREDIENTS: 97.92%
TOTAL 100.00%
CAS# 23564-05-8

EPA Reg. No. 53883-183-50931
Subscript is first letter of lot number

EPA Est. No. 075527-PA-12
32802-MO-1 8378-IN-1

CAUTION: KEEP OUT OF REACH OF CHILDREN

Pledge Of Satisfaction

We have made every effort in the formulation of this product to insure that you will be satisfied with the results. If, for any reason, you are not satisfied, please write and describe the problem. Our lawn and turf specialists will make every effort to assure your success.

Jonathan Green



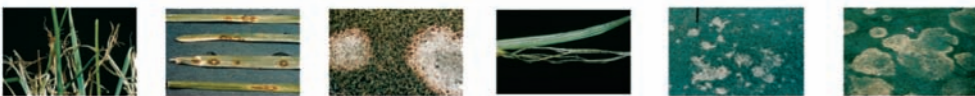
Jonathan Green

FOR THE BEST LAWN IN TOWN

LAWN FUNGUS CONTROL



- SYSTEMIC FUNGICIDE FOR CONTROL OF MOST COMMON TURF DISEASES
- FOR USE ON BLUEGRASS, RYEGRASS, FESCUES AND BENTGRASS LAWNS AND WARM-SEASON GRASSES
- SYSTEMIC, ABSORBED BY THE ROOTS OF THE PLANT



Red Thread Leaf Spot Pink Snow Mold Stripe Smut Dollar Spot Summer Patch



FIRST AID	
If in eyes	<ul style="list-style-type: none"> • Hold eye open and rinse slowly and gently with water for 15-20 minutes. • Remove contact lenses, if present, after the first 5 minutes, then continue rinsing eye. • Call a poison control center or doctor for treatment advice.
If swallowed	<ul style="list-style-type: none"> • Call a poison control center or doctor immediately for treatment advice. • Have person sip a glass of water if able to swallow. • Do not induce vomiting unless told to do so by the poison control center or doctor. • Do not give anything by mouth to an unconscious person.
If inhaled	<ul style="list-style-type: none"> • Move person to fresh air. • If person is not breathing, call 911 or an ambulance, then give artificial respiration, preferably by mouth-to-mouth if possible. • Call a poison control center or doctor for further treatment advice.
If on skin or clothing	<ul style="list-style-type: none"> • Take off contaminated clothing. • Rinse skin immediately with plenty of water for 15-20 minutes. • Call a poison control center or doctor for treatment advice.
HOT LINE NUMBER	
Have the product container or label with you when calling a poison control center or doctor, or going for treatment. You may also contact 1-800-858-7378 for emergency medical treatment information.	

PRECAUTIONARY STATEMENTS
HAZARDS TO HUMANS AND DOMESTIC ANIMALS
CAUTION - Causes moderate eye irritation. Avoid contact with eyes or clothing. Wash thoroughly with soap and water after handling and before eating, drinking, chewing gum, or using tobacco.

ENVIRONMENTAL HAZARDS
Do not apply directly to water. Do not contaminate water when disposing of equipment washwaters or rinsate.

DIRECTIONS FOR USE
It is a violation of Federal law to use this product in a manner inconsistent with its labeling. Do not apply this product in a way that will contact any person or pet, either directly or through drift. Keep people and pets out of the area during application. Do not enter or allow others to enter the treated areas until dusts have settled. Applicators and other handlers who handle this product should wear long-sleeved shirt, long pants, and shoes with socks.

GENERAL INFORMATION
Jonathan Green Lawn Fungus Control is a broad-spectrum fungicide for use on a wide variety of turf diseases. Jonathan Green Lawn Fungus Control may be applied using ground based, hand-operated (push) or mechanical (power) equipment; do not apply this product by hand or with hand-held rotary spreader (e.g., bellygrinder). If a rate range is given, use the higher rate under conditions of severe disease pressure. Contact your State Extension service for recommendations for application schedules appropriate to your area.

Jonathan Green Lawn Fungus Control may be used on all cool and warm season grasses such as Bentgrass, Bluegrass, Bermudagrass, Fescue, Ryegrass, St. Augustinegrass, Zoysiagrass, or their mixtures in residential turf sites. When used in accordance with the instructions in this label, Jonathan Green Lawn Fungus Control is not phytotoxic to any of the above-mentioned grasses.

Application Instructions

- Apply under dry or moist leaf/soil conditions.
- For best results, activate the application within 24 hours with irrigation or natural rainfall. If activating by irrigation, apply 0.10-0.25 inches of water.

USE PRECAUTIONS

- Do not apply this product through any type of irrigation system.
- This product is not guaranteed to be compatible with any other pesticides.
- Do not use on turf being grown for sale or other commercial use as sod.
- Use only properly calibrated application equipment when applying this product.
- Thoroughly clean all application equipment after each use.
- Do not feed clippings to livestock or poultry.
- Do not graze animals on treated turf.

RESISTANCE MANAGEMENT
In order to prevent the development of tolerant strains of fungi, Jonathan Green Lawn Fungus Control should only be used with other fungicides that use different modes of action. Jonathan Green, Inc. does NOT recommend using Jonathan Green Lawn Fungus Control with products containing the active ingredient thiabendazole because thiabendazole has a similar chemistry and mode of action and can contribute to the development of disease tolerance. Jonathan Green Lawn Fungus Control can remain useful for disease control as long as recommended precautions are followed. A tolerant strain of fungi may be present if a Jonathan Green Lawn Fungus Control treatment is found to be ineffective and you should promptly contact your State Agricultural Experiment Station or State Cooperative Extension Service for disease identification and advice on other suitable fungicide or disease control strategies.

MAXIMUM APPLICATION RATES AND MINIMUM RETREATMENT INTERVALS

- DO NOT exceed a maximum of three (3) pounds of product per 1000 square feet per application
- DO NOT exceed a maximum of twelve (12) pounds of product per 1000 square feet per season from any thiophanate-methyl containing product.
- Do not apply application closer than fourteen (14) days from previous treatment.

STORAGE AND DISPOSAL
Do not contaminate water, food, or feed by storage or disposal.
Pesticide Storage: Store in original container in a dry place. Store in locked area out of reach of children and domestic animals.
Pesticide Disposal: Pesticide wastes are acutely hazardous. Improper disposal of excess pesticide, spilled bait, or rinsate is a violation of Federal Law. If these wastes cannot be disposed of by use according to label instructions, contact your State Pesticide or Environmental Control Agency, or the Hazardous Waste representative at the nearest EPA Regional Office for Guidance.
Container Disposal: Non-refillable container. Do not reuse or refill this container. Empty container through use according to label instructions. Offer for recycling, if available. If recycling is not available; then dispose of container in a sanitary landfill or, if allowed by State and local authorities, by burning. If burned, stay out of smoke.

To determine how much you need, multiply the length of your lawn by its width. This equals your total square footage. Deduct any non-lawn areas (house, gardens, etc.) One bag treats up to 15,000 sq. ft.

Length (Feet) x Width (Feet) = Total Square Feet
- Non-Lawn Areas = Total Square Feet coverage you need

Sign up to receive timely lawn & garden tips
www.jonathangreen.com

Distributed by Jonathan Green, Inc.
POB 326, Farmingdale, NJ 07727 1110

Disease(s)	Disease Specific Instructions	Application Rate (Lbs./1000 sq. ft.)
Dollar Spot <i>Moellerodiscus</i> , <i>Lanzia</i> , <i>Sclerotinia</i> Large Brown Patch <i>Rhizoctonia solani</i> Ascochyta Leaf Blight <i>Ascochyta</i> spp. Copper Spot <i>Gloeocercospora sorghii</i> Red Thread <i>Laetisaria fuliformis</i> Fusarium Patch <i>Fusarium nivale</i> Zoysia Patch <i>Rhizoctonia solani</i>	For Prevention: Apply prior to the expected development of the disease using the lowest rate listed. For Treatment: Apply when disease first appears and repeat applications every 14-days. NOTE: May be rotated with chlorothalonil, iprodione, or mancozeb (Protect™).	1.5-3
Pink Snow Mold <i>Microdochium nivale</i>	Make first application prior to cessation of turf growth activity in middle-late Fall or early Winter, or in Spring during periods of thaw, or when disease symptoms first appear. Throughout the expected disease period, continue making applications at 14-day intervals. For best results, make the first application before the turf is completely dormant.	1.5-3
Anthraxnose, foliar <i>Colletotrichum graminicola</i> Anthraxnose, basal <i>Colletotrichum graminicola</i>	For Prevention: Once soil temperature reaches 60°F, make two applications at 14-day intervals. For Treatment: Apply at first sign of disease and continue applications at 14-day intervals. NOTE: May be rotated with chlorothalonil or triadimefon.	1.5-3
Bermudagrass Decline <i>Gaeumannomyces graminis</i> var. <i>graminis</i> Take-All-Patch <i>Gaeumannomyces graminis</i> var. <i>avenae</i>	Apply in mid-July or when disease symptoms first appear and repeat at 14-day intervals for suppression. Use higher rates under most severe disease expression. Follow proper agronomic recommendations to maintain plant vigor.	1.5-3
Cool Season Brown Patch <i>Rhizoctonia cerealis</i> Necrotic Ring Spot <i>Lepidosphaeria korrea</i> Spring Dead Spot <i>Lepidosphaeria korrea</i>	For Prevention: Apply in the fall prior to cessation of turf growth. Make a second application in early Spring when disease first appears or when soil temperatures reach 55-60°F, whichever occurs first. For Treatment: Apply in early Spring when disease first appears and repeat applications every 14-days.	1.5-3
Coprinus Snow Mold <i>Coprinus psychromorbidus</i>	Make two treatments at 21-day intervals in late fall to early winter. Make the last application just prior to first permanent snow cover. NOTE: May be rotated with PCNB.	1.5-3
Fusarium Blight <i>Fusarium roseum</i> and <i>F. triticum</i>	Apply when disease first appears. Make repeat applications at 14-day intervals.	1.5-3
Gray Leaf Spot (Blast) <i>Pyricularia grisea</i>	Make a preventative application prior to the expected onset of disease development. Continue applications at 14-day intervals as needed.	1.5-3
Leaf Spot <i>Drechslera</i> spp. Leaf, Crown, and Root Diseases <i>Bipolaris</i> , <i>Curvularia</i> , and <i>Exserohilum</i>	Apply when disease first appears and make applications at 14-day intervals as needed. NOTE: For severe cases, rotations with chlorothalonil, iprodione, or mancozeb (Protect™) are recommended.	1.5-3
Stripe Smut <i>Ustilago striiformis</i>	For Prevention: Apply in spring and fall. For Treatment: Make two applications, the first when the disease first appears and the second 14-days later.	1.5-3
Summer Patch <i>Magnaporthe poae</i>	For Prevention: Using a 21-day reapplication interval, make three applications starting in late April or early May. For Treatment: Apply at 14-day intervals when disease first appears. Rotations may be used as part of the three-application program.	1.5-3

SPREADER SETTINGS*			
Broadcast Spreaders	1.5 lbs. per 1,000 sq. ft. (15,000 sq. ft.)	3.0 lbs. per 1,000 sq. ft. (7,500 sq. ft.)	Drop Spreaders
Jonathan Green Green-Meter Rotary	2-1/2	3	Jonathan Green Green-Meter Drop
Cyclone B1	2-1/2	3	Earthway
EZ Republic	1-1/2	3	Greenview Drop III
Earthway	10	14	Precision FH22
Greenview Jet Spread III	3	4	Republic EZ 530
Lesco	H	K	Scotts AccuGreen
Precision SB50	5	8	1,000 2,000 & 3,000
Prizelawn CBR III	F-G	I-J	Scotts PF4
Republic EZ 540	1-1/2	3	Sears
Scotts			
Broadcast Spreader Path	Deluxe EdgeGuard 3-1/2	5	Drop Spreader Path
For best results, apply in a circular pattern starting on the outside and working toward the center. A little overlap of product will ensure complete coverage.	Standard 3-1/2	5	First, apply 2 border strips along the edge of each end of the lawn, overlapping slightly and shutting off the spreader before turning as you reach the edge of the border strips.
	Basic 3-1/2	5	
	Lawn Pro 3-1/2	5	
	SpeedyGreen		
	1000-2000-3000	3-1/2	5
	EasyGreen	24	27
	Sears	4-1/2	7
	Spyker	4	5

Note: Spreader settings given are approximate and variation can occur between identical models. User should calibrate spreader by accurately weighing a few pounds into your spreader and applying to a measured area. Then adjust spreader setting if necessary to assure correct rate of application.

WARRANTY STATEMENT

Jonathan Green, Inc. warrants that this product conforms to the chemical description on the label thereof and is reasonably fit for purposes stated on such label only when used in accordance with directions under normal use conditions. It is impossible to eliminate all risks inherently associated with use of this product. Crop injury, ineffectiveness, or other unintended consequences may result because of such factors as weather conditions, presence of other materials, or the manner of use or application, all of which are beyond the control of Jonathan Green, Inc. To the extent allowed by law, Jonathan Green, Inc. shall in no event be liable for consequential, special, or indirect damages resulting from the use or handling of this product. All such risks shall be assumed by the Buyer. Except, as expressly provided herein, Jonathan Green, Inc. makes no warranties, guarantees, or representations of any kind, either expressed or implied, or by usage of trade, statutory or otherwise, with regard to the product sold, including, but not limited to merchantability, fitness for a particular purpose, use or eligibility of the product for any particular trade usage. The exclusive remedy of any buyer or user of this product for any and all losses, injuries, or damage resulting from or in any way arising from the use, handling, or application of this product, whether in contract, warranty, tort, negligence, strict liability, or otherwise, shall be damages not exceeding the purchase price paid for this product or, at Jonathan Green, Inc. election, the replacement of this product.