

Welcome to the Prince Dealer Training Program

- Max Lawn 4-Bag Program Fertilizer Training Seminar
- Nature's Select Lawn Seeds
- Soil pH adjustments
- Basic plant care knowledge

Professional Results
Require
Professional Products

EC GROW

Prince®

MAXLAWN
Premium Fertilizer

The logo for Prince, featuring the word "Prince" in a blue, stylized, gothic-style font with a small crown above the letter 'i'.

Prince®

Fertilizer Training Seminar

The logo for MAXLAWN Premium Fertilizer. The word "MAX" is in a large, bold, green font, with a stylized green leaf graphic integrated into the letter 'X'. The word "LAWN" is in a smaller, green, serif font to the right of "MAX". Below this, the words "Premium Fertilizer" are written in a smaller, black, serif font.

MAXLAWN
Premium Fertilizer

The logo for EC GROW. The words "EC GROW" are in a black, serif font. A green leaf graphic is integrated into the letter 'O' of "GROW".

EC GROW

Fertilizer “101”

NPK - Understanding fertilizer analysis and what each nutrient use is for to promote a healthy, strong, turfgrass.

What does the fertilizer analysis mean?

- **NITROGEN** Promotes dark green color to grass and increases leaf and stem growth.
- **PHOSPHOROUS** Stimulates early root formation and growth. Prepares grass for dormancy and winter hardiness.
- **POTASH** Provides overall health to grass. Increase disease resistance and drought stress.

Fertilizer Analysis

26-2-8
N P K
Nitrogen Phosphorus Potash
Percentage of Weight

Up-Down-Out

EC GROW

Prince®

MAXLAWN
Premium Fertilizer

Major Micro Nutrients

- Iron (Fe)
 - Integral Part In Chlorophyll Production
 - Gives Turf A Dark Green Color
- Sulfur
 - Important For Making Amino Acids
 - Gives Turf A Dark Green Color



EC GROW

Prince[®]

MAXLAWN
Premium Fertilizer

Minor Micro Nutrients

- Boron
- Chlorine
- Copper
- Manganese
- Molybdenum
- Zinc
- Calcium



EC GROW

Prince[®]

MAXLAWN
Premium Fertilizer

Nitrogen Ingredients



Urea
46-0-0
Fast
Release



Poly Coated
Sulfur Coated
Urea
37-0-0
Slow Release

MaxLawn has combination of fast and slow release nitrogen for optimum performance and greening.

EC GROW

Prince[®]

MAXLAWN
Premium Fertilizer

Phosphorous Ingredients



Mono Ammonium
Phosphate

MAP

11-52-0



Diammonium Phosphate

DAP

18-46-0

EC GROW

Prince[®]

MAXLAWN
Premium Fertilizer

Potassium Ingredients



Muriate of Potash

MOP

0-0-61



Sulfate of Potash

SOP

0-0-50

EC GROW

Prince[®]

MAXLAWN
Premium Fertilizer



What Does It Offer

- Complete Fertilizer Program
- Phosphorus Free Line If Needed.
- Brand Recognition
- 5,000 SqFt & 10,000 SqFt Bags
- Highest Quality Product – Focused Results

EC GROW

Prince®

MAXLAWN
Premium Fertilizer



vs. Scotts

- Lower Cost For The Customer
- Equal To Or Better Value For Your Customers
- High Quality Full Product Line
- 4 Bag Program for Season Long Feeding
- Not in Big Box Retail Stores

EC GROW

Prince[®]

MAXLAWN
Premium Fertilizer

Homogenous vs. Blend

- Scott's Promotes Its "All In One Granule"
- Facts – Homogenous vs. Blend
 - Nutrients Must Go Into Solution For The Roots To Take Them Up
 - University Trials Show No Difference In Results
 - Scotts Sell Blended Fertilizers in its "No Phosphorus" Products
 - MaxLawn Lawn Care Uses Blends for Their Applications



EC GROW

Prince®

MAXLAWN
Premium Fertilizer

Crabgrass Preventer



- Crab-Buster - Dithiopyr
- #1 Product Used On Golf Courses
- Non-staining, Clear, Odorless vs. Bright Yellow, Highly Staining - Scotts Halts
- Newest Technology
- Better Crabgrass Control than with Scotts Halts
- Post-emergent Control
- Helps Control Summer Annual Weeds

EC GROW

Prince®

MAXLAWN
Premium Fertilizer

Crabgrass Preventer



Application Steps

- Apply To Dry Turf
- Soil Temperatures are 55°
 - Crabgrass Germinates About The Time Dandelions Go To Seed
- Water In – Activates Product
- Do Not Apply To Newly Seed Areas Or Areas That Need To Be Reseeded
- Safe To Re-enter After Lawn Is Dry

EC GROW

Prince®

MAXLAWN
Premium Fertilizer

Common Grassy Weeds



Crabgrass



Barnyardgrass



Yellow Foxtail



Goosegrass



Annual Bluegrass

EC GROW

Prince[®]

MAXLAWN
Premium Fertilizer

Weed & Feed



- Viper Herbicide
- Controls Over 200 Broadleaf Weeds
- MaxLawn Has 4 Active Ingredients Scotts Only Has 2
- Mode Of Action – Contact – Through The Leaf
- Small Particle Drying Agent Added To Help With Coverage

EC GROW

Prince®

MAXLAWN
Premium Fertilizer

Weed & Feed



■ Application Steps

- Apply When Weeds Are Young & Actively Growing
- Mow High First So Particles Can Get To Weed
- Apply To Wet Turf, Lightly Water or Heavy Dew, So Particles Can Stick To The Weeds
- Do Not Water In After Application
- No Rainfall Or Watering For 24-48 Hours For Best Results

EC GROW

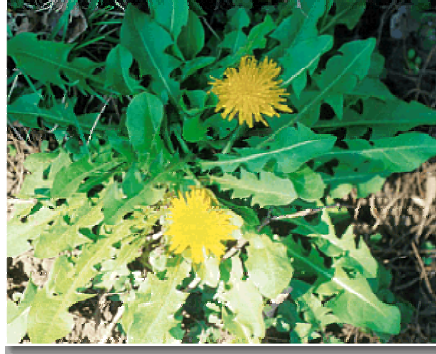
Prince[®]

MAXLAWN
Premium Fertilizer

Common Broadleaf Weeds



Oxalis



Dandelion



Creeping Charlie-Ground Ivy



Wild Violet



White Clover



Plantain

EC GROW

Prince®

MAXLAWN
Premium Fertilizer

Turf Food



- Most Forgotten Application
- Highest Amount Of Nitrogen Applied In Any Single Application
- Helps Fight Off The Stresses of Summer – Heat, Drought, Insects, High Traffic
- Promotes Healthier Turf
- Can Be Used Any Time

EC GROW

Prince®

MAXLAWN
Premium Fertilizer

Turf Food



- Application Steps
 - Apply Around July Or Any Time
 - Apply To Dry Turf
 - Water In If Rainfall Does Not Happen Within 24 Hours

EC GROW

Prince[®]

MAXLAWN
Premium Fertilizer

Winterizer



- Important Application – Helps Prepare Turf for winter
- Less Potential For Winter Kill Damage If Turf Is Healthy
- Less Stress On The Plant When Things Warm Up In The Spring
- Application Steps
 - Apply Around Labor Day through November
 - Apply To Dry Turf
 - Water In If Rainfall Does Not Happen Within 24 Hours

Starter

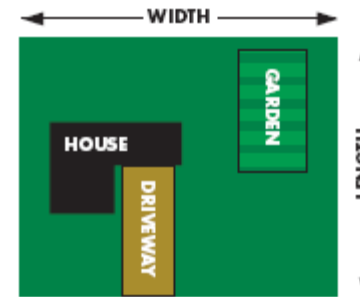


- Use When Sodding Or Seeding
- High Phosphorous Helps Seed Germinate Quickly
- Establishes Roots More Quickly
- Slow Release Nitrogen Not As Critical
- Can Be Used In Gardens Or Flower Beds
- Application Steps
 - Anytime When Seeding Turf From Seed Or Sodding
 - Rake Or Drag Into Soil

Application Of Products

- Determine The Square Footage Of The Area That You Will Be Applying Fertilizer

_____ Length
x _____ Width
_____ Total Square Footage
- _____ Non Lawn Area (House, Driveway, Sidewalks etc.)
_____ Total Sq. Ft.



Types of Spreaders



Broadcast Spreader

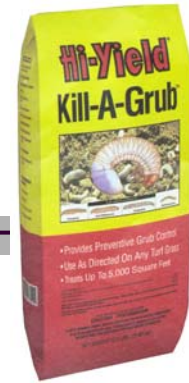


Drop Spreader

Application Errors



Hi-Yield. Grub Control



- Kill-A-Grub Grub Control vs. Scotts Grub Ex
 - Mach 2 vs. Merit
 - Both Highly Effective On Grubs – Promote Season Long Control
 - 17# Bag vs. 10# - Easier To Spread Evenly
 - Mach 2 Has Some Surface Feeding Activity
 - Mach 2 Does Not Have To Be Watered In Immediately
 - Mach 2 Works Once Its Watered Into The Soil – Contact and Ingestion
 - Merit Needs 20-30 Days For The Chemical To Get In The Soil & Be Taken Up By The Plant
 - 5000 Sq. Ft. Application



Prince®



Hi-Yield.

Life Cycle Of Grubs

THE GRUB LIFE CYCLE

The best time to apply is just prior to egg hatch.



WHEN TO APPLY

Application timing depends on the target pest's life cycle. In general, the best time to apply MACH 2 for grub control is just prior to egg hatch (see life cycle chart).

But it will also work up through the second instar. Just one application provides control that lasts through the peak months of the season.

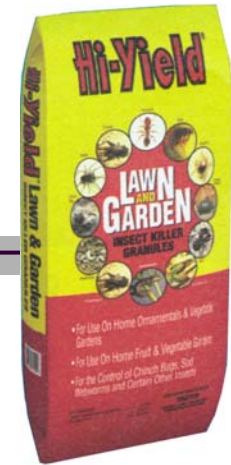
**Apply Kill-A-Grub Grub Control
June Through July**

EC GROW

Prince®

MAXLAWN
Premium Fertilizer

Lawn Insect Control



- Controls Over 60 Surface Feeding Insects
 - Ants, Fleas, Ticks, Chinch Bugs & More
- Carbaryl - Sevin
- Can Repeat Applications Every 7-10 Days If Needed
- Lawn Insect Control vs. Ortho Max
 - 11# Bag vs. 10# to Cover 5,000 sq. ft.
 - 1# More Product – 10% More Product
 - More Chemical Better Results
 - Follow Label Direction For Application



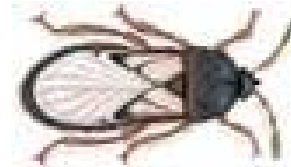
Common Lawn Insects



Army Worm



Tick



Chinch bug



Fire Ant



Flea



Ant



Sod Web Worm



White Grub

EC GROW

Prince[®]

MAXLAWN
Premium Fertilizer