



J&D Manufacturing



LEADERS IN COW COMFORT

Square Tube Superlock Panel

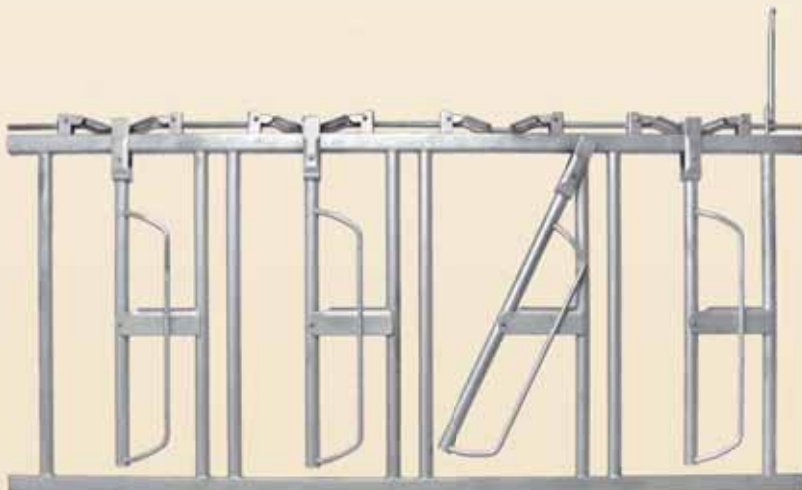
J&D Manufacturing's Square Tube Superlock Panel is made to last! It offers standard 2"x 2" heavy duty square tubing on top and bottom rails for added strength and durability. After welding and fabrication the entire panel is hot dip galvanized both inside and out ensuring product longevity. The swing arm is counter weighted for automatic return. The easy operation handle allows you to lock the neck opening closed. Once locked individual cows can easily be released with the flip of the release latch on top of each opening. Square Tube Superlock Panel can be face or comfort tilt mounted.



Features

- Heavy duty 2"x 2" square tubing, top and bottom rail
- Panels are hot dip galvanized after welding
- 7 1/2" neck opening for cows
- 6" neck opening for heifers
- Allows you to lock in one or more animals and let the rest out
- Natural release of down cows
- Swing arm is counter weighted to automatically return to the open position
- Rubber cushion on swing arm return, to reduce noise
- No latch movement in open position
- Minimal latch noise during operation

Hot Dip Galvanized After Welding



Part#	Panel Length (actual)	Openings Per Panel	Neck Opening	Panel Height
Cow Panels				
TPQ8	8' (95")	4	7 1/2"	40"
TPQ10	10' (119")	5	7 1/2"	40"
TPQ12	12' (143")	6	7 1/2"	40"
Heifer Panels				
TPQH8	8' (95")	5	6"	40"
TPQH10	10' (119")	6	6"	40"
TPQH12	12' (143")	7	6"	40"

For accessories and mounting hardware see page 1802b



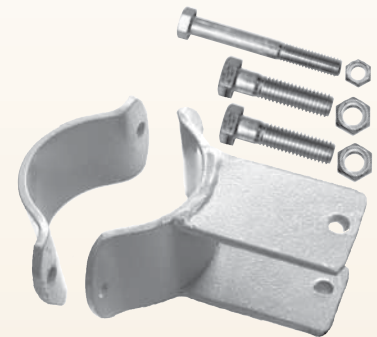
Square Tube Superlock Panel Accessories and Mounting Hardware



HPS100



HPS106



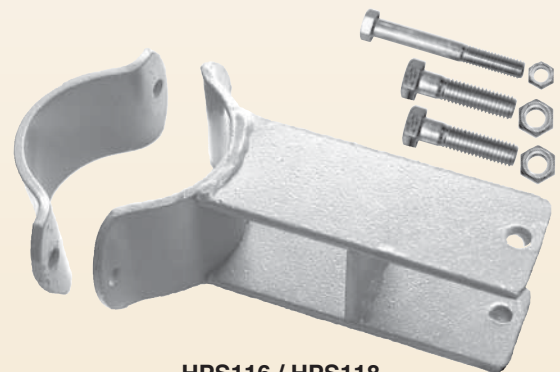
HPS115 / HPS117



HPS102



HPS108



HPS116 / HPS118



HPS104

Hot Dip Galvanized

Part#	Description
HPS100	Headlock Bottom Bracket - Bolt or Weld
HPS102	Headlock Flush or Tip Out Top Bracket - Bolt or Weld
HPS104	Square Splice Insert
HPS106	Control Rod Connector - Weld
HPS108	Individual Retainer Lock
HPS110	Headlock Control Rod Handle
HPS115	Flush or Tilt Bolt-on Face Mount - 2 7/8" - 3 1/2" Post
HPS116	Tilt, Bolt-on Face Mount - 2 7/8" - 3 1/2" Post
HPS117	Flush or Tilt Bolt-on Face Mount - 4" - 4 1/2" Post
HPS118	Tilt, Bolt-on Face Mount - 4" - 4 1/2" Post