



J&D Manufacturing

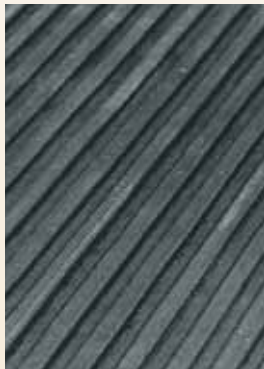


LEADERS IN COW COMFORT

Rolled Rubber

J&D Manufacturing's full line of rolled rubber designed for walkways, alley ways and stall installation. Our unique chemistry has not changed in the past 5 years and that's why J&D Manufacturing rubber stands up in your dairy. The rubber compound has UV inhibitors and the right percentage of virgin rubber for wearability, minimal stretch and expansion. We also have a small percent of our secret additive rubber that adds softness. The hammer top is designed for maximum gripping by the cows. Easy to install and maintain.

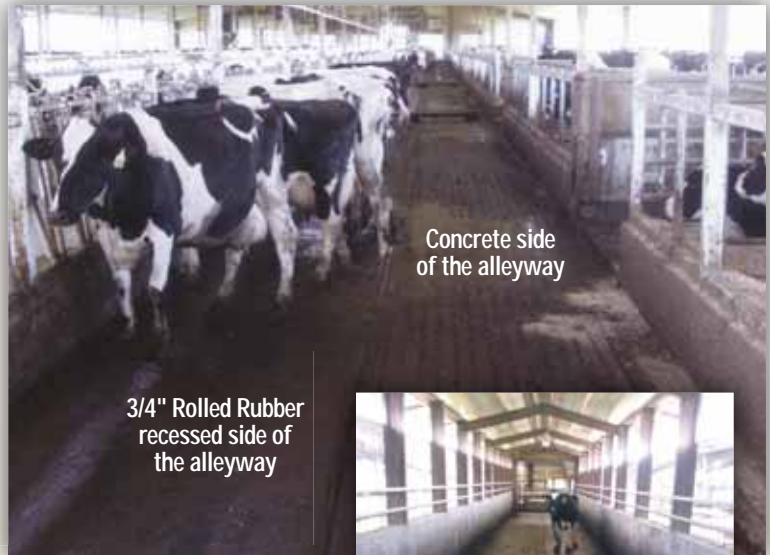
Our rolled rubber can be used with alley scrappers when wheels or plastic is attached to the bottom blade.



Micro-Groove Bottom



Hammer Top



Concrete side of the alleyway

3/4" Rolled Rubber recessed side of the alleyway



Seamless Rolls



Great for:

- Walkways
- Alleyways
- Stalls
- Holding Areas

Alley Way Installation

Features

- Impact absorbing
- Provides excellent traction
- Standard 100' without a seam
- Standard rubber thicknesses 10MM, 5/8", and 3/4"
- Durable construction
- Low installation cost
- Proven cow acceptance
- Non-Absorbent
- Will NOT promote bacteria growth
- UV inhibitor to protect from sun exposure
- NOT conveyer belting which is too hard and extremely slippery
- NOT fitness flooring which is too soft and stretches
- **2 year warranty** prorated on approved installations
- Special order sizes available

Part#	Description	Square Footage
10MM Thick		
SDMS65	Rolled Rubber, 10MM thick, 65" W x 100' L	542
SDMS65-50	Rolled Rubber, 10MM thick, 65" W x 50' L	271
5/8" Thick		
SDR584	Rolled Rubber, 5/8" thick, 4' W x 100' L	400
SDR585	Rolled Rubber, 5/8" thick, 5' W x 100' L	500
SDR586	Rolled Rubber, 5/8" thick, 6' W x 100' L	600
3/4" Thick		
SDR344	Rolled Rubber, 3/4" thick, 4' W x 100' L	400
SDR345	Rolled Rubber, 3/4" thick, 5' W x 100' L	500
SDR346	Rolled Rubber, 3/4" thick, 6' W x 100' L	600
Installation Hardware		
HD10225	Anchor, Split Drive 1/4" x 3"	
HD10224	Washer, fender 3/8" x 1 1/2" OD	
<ul style="list-style-type: none"> • Additional lengths (up to 150'), widths (up to 7.5') and thicknesses available upon special order. • Minimum quantity for special orders may apply 		
<i>Contact your local J&D Manufacturing Representative for more information.</i>		