



**Eau Claire County
Humane Association**



Please visit us at:
3900 Old Town Hall Road
Eau Claire WI 54701

Phone: (715) 839-4747
Website: www.eccha.org

Shelter Open Hours

Sunday: Noon to 4 p.m.
Monday: Closed
Tuesday: Noon to 5 p.m.
Wednesday: Noon to 5 p.m.
Thursday: Noon to 7 p.m.
Friday: Noon to 5 p.m.
Saturday: Noon to 4 p.m.

The shelter is closed until noon because we have many things to do before we open to the public: cleaning 86 cages, feeding, watering, walking, vaccinating, socializing and grooming animals and a mountain of paperwork. Please respect our hours.

Surrendering an Animal

If you must surrender an animal, please call us during our open hours to schedule an appointment. This helps to ensure a smooth transition. Please respect our hours.



**Eau Claire
County
Humane
Association**

www.eccha.org



**Each year, we provide care and shelter
to approximately 2,500 animals.**

The Eau Claire County Humane Association (ECCHA) is a non-profit organization that cares for unwanted and abandoned animals in Eau Claire County.

OUR MISSION:

- Preventing cruelty to animals.
- Providing shelter and compassionate care for abused, neglected, lost, and unwanted animals.
- Adopting animals into loving, responsible homes.
- Educating adults and children about the importance of spay/neutering to control pet overpopulation.
- Educating adults and children about the humane treatment of animals and responsible pet ownership.
- Enforcing animal protection laws.

Each year, we provide care and shelter to approximately 2,500 animals. These animals are strays brought in by local officials and private citizens or animals surrendered to the shelter by their owners.

Over the years, the Eau Claire County Humane Association has saved the lives of countless animals through immediate care and treatment, and ultimately adoption. Because of the Association, these otherwise unwanted pets have found happy, loving homes.

We are sometimes asked why we must euthanize animals. The ECCHA has an “open door” policy on animals in need. We accept every stray, abused, and unwanted animal in addition to cute, young, healthy puppies and kittens. Animals that are not claimed by their owners are carefully evaluated and most get a second chance at finding a new home. However, we will not place aggressive, unstable, or very ill animals for adoption. And, as much as we hate it, sometimes we have to make difficult decisions when there are just too many animals and not enough good homes. It is our heartfelt wish to never again euthanize an adoptable animal, but we need a lot of help to reach that goal.



We have many great animals in need of loving homes. To see a list of animals currently available visit our website:

www.eccha.org

You Can Help

- Become a member.
- Adopt a pet.
- Foster a litter of kittens or a dog recovering from surgery.
- Walk dogs or play with cats.
- Remember us in your will.
- Donate money in honor of a friend or pet.
- Collect pledges for the Fido Fun Run.
- Encourage a business to donate to the silent auction.
- Write a check for the spay/neuter fund.
- Sterilize your pets and make sure they wear adequate identification. Encourage others to do the same.
- Check out our website to see what else you can do to help: www.eccha.org

Together, we can save so many lives, just one life at a time.

**Eau Claire County Humane Association
Membership / Donation Form**

Name _____

Address _____

City _____

State _____ Zip _____

Phone _____

MEMBERSHIP CATEGORIES

(voting privileges except as noted)

Regular Membership

\$5 Pet*

\$5 Youth (under 18)*

\$30 Adult Individual

\$50 Adult Couple

\$15 Sr. Individual (62+ age)

\$25 Sr. Couple (62+ age)

Humanitarian Club

\$100 Individual

\$100 Business*

\$200 Couple

\$201-\$500 Supporter

\$501-\$1000 Sustainer

\$1000+ Advocate

* Non-voting member

ADDITIONAL DONATIONS

\$75 Annual Cat Cage Sponsor

\$75 Annual Dog Cage Sponsor

General Operating Fund \$ _____

Spay/Neuter Fund \$ _____

Mettler Emergency Medical Fund \$ _____

Honorarium / Memorial Donation \$ _____

in honor of **OR** in memory of person pet

Name _____

Send honorarium or memorial acknowledgement to:

(amount will not be disclosed)

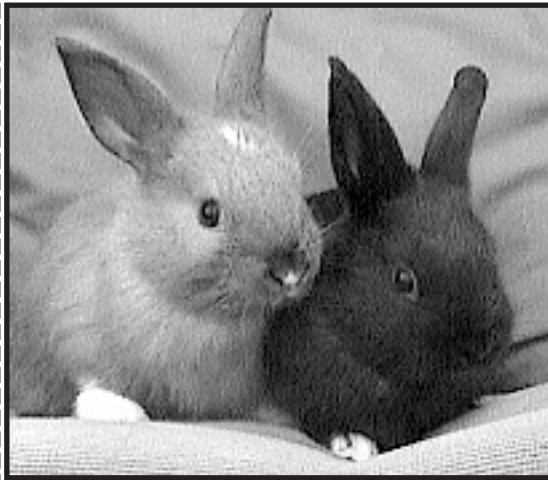
Thank you for supporting ECCHA.

If you would like to receive an acknowledgement, please check here: If you prefer we save postage to help the animals, then know we are grateful for your support. Donations/memberships are tax deductible.

Total amount enclosed: _____

Please make check payable to ECCHA.

Mail to 3900 Old Town Hall Rd., Eau Claire, WI 54701



Adopt

We have many great animals in need of loving homes. In addition to dogs and cats, we also need homes for guinea pigs, rabbits, and ferrets.

The Shelter welcomes your visits during open business hours. We are located on 3900 Old Town Hall Road, south of I-94. Old Town Hall Road is just off Hwy. 93.

To see a list of animals currently available, visit our website.

www.eccha.org

If you decide to adopt an animal, you will be asked to fill out an adoption form, provide identification, agree to have the animal sterilized (if it is not already), vaccinated, and licensed. You will be asked to sign a contract agreeing to additional guidelines, to assure that you are aware of the responsibilities of bringing a new pet into your home.

Placing animals into homes where they will be well cared for and loved by everyone in the family is the goal of the Eau Claire County Humane Association.

**Become “a voice for those who cannot speak.”
Adopt. Donate. Volunteer.**

Donate

Donate Supplies

The Eau Claire County Humane Association is always in need of the following items. If you would care to donate any of the items listed below, we would be very grateful!

1. Purina dog chow
2. Purina cat chow
3. Purina puppy chow
4. Purina kitten chow
5. Esbilac puppy formula
6. KMR kitten formula
7. Rawhide dog chews
8. Dog and cat toys
9. Leashes and collars (especially small ones)
10. Bleach
11. Lysol disinfectant spray
12. Powdered laundry detergent
13. Disposable latex gloves
14. Paper towels
15. Disinfectant wipes
16. Postage stamps
17. Non-clumping cat litter

Become a Member

Your membership fee helps us accomplish our mission. As a member, you are able to vote for board representatives, and assist in establishing ECCHA policies.

Make a Monetary Donation

ECCHA is not funded through state or local government appropriation. Nor do we receive any funding from the United Way. We are a 501(c)3 non-profit organization. Approximately 50% of our funding comes from memberships, donations, estate bequests and fundraising events; the remaining from adoption and boarding fees and municipal service contracts. Your donation is greatly needed and appreciated.

Volunteer

Area volunteers help us with their time and talents. We simply could not exist without them. There are many ways you can volunteer and make a difference in the lives of homeless pets. For more information, call us at (715) 839-4747.

Help at the Shelter

Volunteers help out at the shelter itself; walking dogs, socializing cats, helping with laundry, cleaning, paperwork and office tasks. A volunteer session is held twice a month to train new volunteers who want to help at the Shelter. To register, call us at (715) 839-4747.

Help with Fundraising

Volunteers help at events such as candy bar sales, the Fido Fun Run, dog washes, holiday gift wrapping, thrift sales, holiday craft & bake bazaars, raffles, Pictures with Santa, and pet food drives, just to name a few.

Help with Education and Outreach

Volunteers help at school and other community events to set up booths, hand out information, answer questions, and assist with any animals that are used at the events.

Join a Committee

- The Fundraising Committee plans our fundraisers. They constantly look for new and creative ways to increase our revenue so we can continue to accomplish our mission.
- The Education Committee promotes the shelter within the community. They strive to make the community aware of the effects of pet overpopulation, and they teach people how to help “those who cannot speak.”