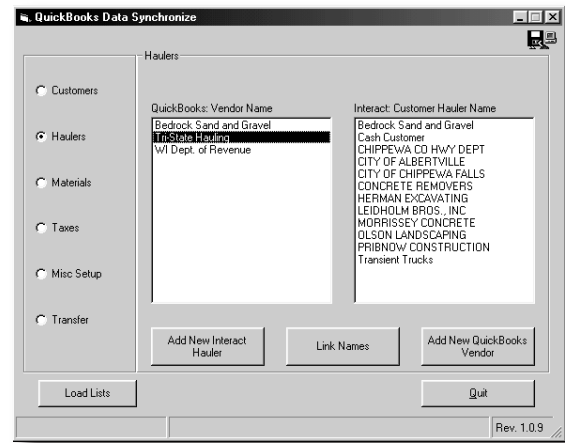


QuickBooks Interface Module

Are you hand-entering totals of scale tickets (and possibly hand entering EACH scale ticket) into QuickBooks? Are you making duplicate entries into both QuickBooks and your current scale software program?

If you answered yes to any of the questions above, the QuickBooks Interface Module can help!

1. This module can be used to synchronize account, hauler, material and tax tables. Double entry is eliminated since the two programs synchronize with each other!
2. This module will transfer the quantity and charge calculated in Interact® to QuickBooks Pro. This allows QuickBooks Pro to calculate the rate (charge / quantity = rate). This approach takes advantage of the multiple price table structure and special item pricing for jobs within Interact®.
3. Given the way QuickBooks Pro performs its calculations, the rate printed on the QuickBooks Pro invoice may carry out to five decimal places. Please inquire for solutions to work around this issue. One solution that works well for our aggregate customers is to use Interact® Professional for printing of invoices (Interact® Professional allows invoices to be grouped by Job - something QuickBooks will not allow) and then use QuickBooks for posting payments, general ledgers and printing of statements.



The QuickBooks Interface Module accurately transfers the following transaction data from Interact® to QuickBooks Pro:

- Account Name
- Unit of Measure
- Invoice Number
- Transaction Date
- Ticket Number
- Item/Material Code
- Base Charge
- Tax
- Freight Charges
- Transfer Date
- Quantity (Unit Count, Net Weight, Yards)

