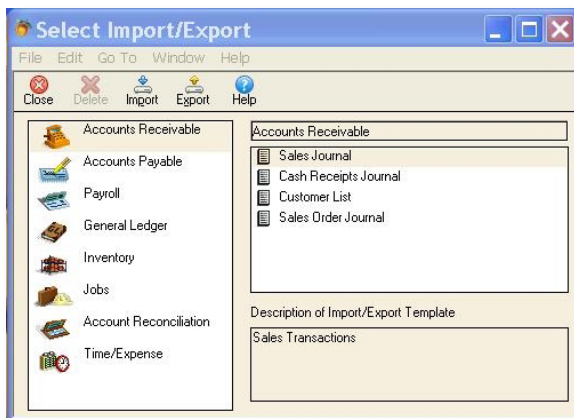


# Peachtree® Custom Export

Are you tired of hand entering totals of scale tickets (or possibly even hand entering EACH scale ticket) into Peachtree®? Are you making duplicate entries in Peachtree® and your current scale software program? If you answered yes to either of these questions, AWS can help with the Peachtree® Custom Export!



The Peachtree® Custom Export creates an ASCII comma delimited file in the format required by Peachtree® to import transaction data into the Peachtree® invoice table. This prepares the data from the scale tickets you entered in Interact® to be transferred to Peachtree® automatically, saving you time and money. Your days of duplicate entries into two programs can be a thing of the past with our efficient custom export.



The Peachtree® Custom Export will accurately transfer the following transaction data from Interact® to Peachtree®:

- Customer ID
- Invoice #
- Date
- Accounts Receivable Account
- Number of Distributions
- Quantity
- Product Code
- G/L Account
- Unit Price
- Tax Type
- Amount
- Item ID
- Apply to invoice distribution

Free up your staff to perform more important functions by ordering the Peachtree® Custom Export today! For more information, call 888-726-0691.

